

KÄNGURUH-SYSTEM® 



**A coordinated system to meet a complex challenge
- the HUPFER® KÄNGURUH-SYSTEM®.**



■ Loading the push-in rack with packaged sterile goods



■ Transfer via the push-through hatch



■ Docking at the transition board



■ Transfer of the sterile goods at the transfer point

With its numerous advantages the HUPFER® KÄNGURUH-SYSTEM® provides the technical assistance necessary to make the sterile goods cycle run much more smoothly. When it is integrated into the process chain encompassing the whole area of sterile goods logistics, it clearly optimises the working process and therefore has a positive influence on efficiency and performance. The individual components of the HUPFER® KÄNGURUH-SYSTEM® are so tailored to each other that the strict separation of sterile and non-sterile areas cannot be breached. A transport trolley is used to move the sterile goods in containers or in soft packaging and baskets from the sterilisation area to the operating theatre transfer point. Depending on the transfer situation of a particular location, a transfer trolley is also employed. The real key feature is that the packaged sterile goods are located in a push-in rack which is locked inside the transport trolley. After docking, this locking arrangement is easily released using a hand-operated lever, and the push-in rack is pushed onto the transfer trolley. Optimal separation of the sterile and non-sterile areas is guaranteed and the sterile goods do not need to be rearranged individually. After this transfer procedure, the sterile goods can then be transported further, put into intermediate storage or prepared for use.

The highly adaptable HUPFER® KÄNGURUH-SYSTEM® can be used in any sterilisation situation.



Loading a floor-level steriliser



Transfer of the insert stand into the steriliser by direct docking



The HUPFER® KÄNGURUH-SYSTEM® is designed for maximum flexibility in overall handling. It has always been taken into account that a very wide range of situations in hospitals and sterilisation operations can undergo clear improvements in relation to working processes without having to be fundamentally changed. The HUPFER® KÄNGURUH-SYSTEM® can easily be adapted to sterilisers of many different construction types and manufacturers. Whether loading with individual push-in racks or a number of these coupled together is desired, the system allows for each steriliser to be loaded in its own particular way. Automatic or even manual insertion or removal of the loaded push-in racks can both be accommodated. The great improvement in all situations is that loading and even unloading can be carried out without repacking the sterile goods containers, rendering procedures more efficient. The abundant feedback received by HUPFER® clearly shows how - in actual practice and experience - the KÄNGURUH-SYSTEM® can be used to optimise the sterile goods cycle and integrated into the circumstances of a particular location.

Increased efficiency in many areas - the HUPFER® KÄNGURUH-SYSTEM® improves more than just the sterile goods cycle.



Transport and storage of pharmaceuticals



Transport and storage of infusion materials

The safe and reliable handling of sterile goods was always kept in view throughout the development and enhancement of the HUPFER® KÄNGURUH-SYSTEM®. In order to improve efficiency and performance and to facilitate and rationalise handling HUPFER® also looked at the entire sterile goods cycle. Thus, it came to be understood that the storage, intermediate storage and provision of sterile goods always form significant parts of the whole area of sterile goods logistics. After docking a transfer trolley at a fixed platform, the push-in rack is unlocked by hand and pushed across. Having thus been placed on the platform, the push-in rack can assume the function of a storage shelving unit, for example for intermediate storage or provision of sterile goods in the operating theatre area. The fact that the sterile goods containers never have to be individually repackaged but can be moved as large units considerably facilitates working processes. The potential for improvement in handling and efficiency in sterile goods logistics offered by the HUPFER® KÄNGURUH-SYSTEM® has also been recognised in other areas of hospitals and clinics. It is no surprise therefore that it is not now used exclusively for sterile goods but also to improve the logistics of handling infusion materials and pharmaceuticals.



Integrated storage of sterile goods using the KÄNGURUH-SYSTEM® and Norm 5/Medidul shelving system.

In-house or external transportation - a HUPFER® KÄNGURUH-SYSTEM® for all transport requirements.



Automated trolley transport, suspended on the top-mounted electric conveyor



External transportation by lorry



Transport trolleys in in-line operation



Pushing a transport trolley into a washing system



It doesn't matter which organisational plan a clinic or hospital has chosen, to carry out sterilisation in-house or on separate premises, the HUPFER® KÄNGURUH-SYSTEM® works with the selected solution. The vertical pushing rails make the transport trolley easy and ergonomic to manoeuvre in-house, regardless of the size of the person handling it. The standard design with smooth-running steering castors, with or without locks, makes transportation easy. Individual changes can be made to this standard design, for instance, the arrangement of the castors can be changed as necessary. Castors can be specially fitted to fix the direction of the trolleys. An optional central locking mechanism makes it easier to lock the transport trolley in position quickly. The KÄNGURUH-SYSTEM® can also be adapted to special in-house transport concepts, for example driverless transport systems. In this area, HUPFER® can draw on a wealth of experience and feedback. Designs enabling safe in-line operation of a number of transport trolleys round off the options for implementing solutions successfully and efficiently. Detailed care has also been given to secure external transportation. A transport latch with a sealing option and impact protection for lorry transportation ensure safety.

Picture from MLR System GmbH Ludwigsburg

Automated trolley transportation, ground-based with driverless transport system

The HUPFER® KÄNGURUH-SYSTEM® offers unprecedented potential for efficiency and performance by precisely matching its individual components to the requirements of clinics, hospitals and sterilisation establishments. This system makes it possible to achieve a closed sterile goods cycle for an unbroken process chain in the area of sterile goods logistics.

Durable
All components of the HUPFER® KÄNGURUH-SYSTEM® are produced to the highest quality from stainless steel, to offer maximum hygiene and to withstand the most strenuous use.



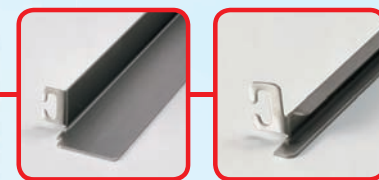
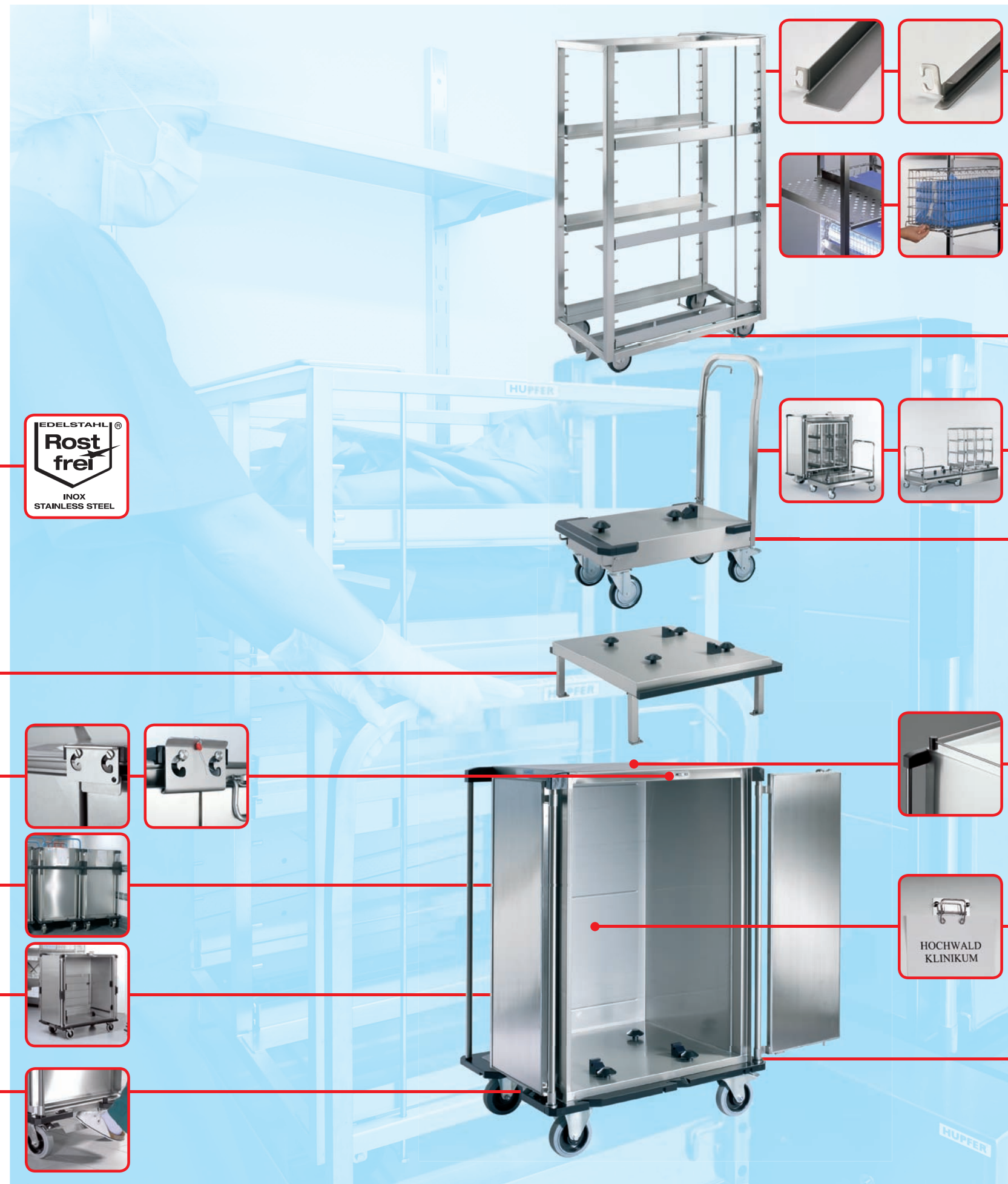
Stable
Fixed platform to receive push-in rack in sizes 2x3/6 StU, 9 StU/2x1-compartment ISO/1x2-compartment ISO, base plinth available on request.

Secure
An optional transport latch, with or without sealing option, ensures maximum security for the sterile goods.

Impact-protected
Trolleys can be optionally fitted with our special impact protection for transportation in lorries.

Multi-purpose
The transport trolley is available as a multi-purpose trolley thus permitting a wide range of different items to be transported.

Position-lockable
The transport trolley can be locked in position by simply stepping on the optional central locking device.



Versatile
L-shaped or U-shaped rails permit optimal adaptation to accommodate StU baskets and containers or DIN ISO baskets.



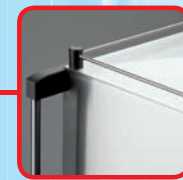
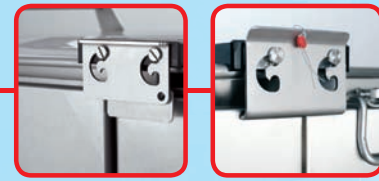
Adaptable
Wire shelves and perforated insert shelves placed on L-shaped rails permit the storage of individual items and containers. Insert frame sets which facilitate working procedures are available on request.



Variable capacity
Push-in racks can be supplied as 3, 6, 9 StU, 1-compartment ISO, 2-compartment ISO stands or as a customised design depending on the steriliser concerned.



Variable capacity
Transfer trolleys can be supplied as 3, 6, 9 StU, 1-compartment ISO or 2-compartment ISO trolleys. Safety assured by frontal docking with the steriliser with double unlocking. Design suitable for use with sterilisation and washing systems.



Safe transportation
The optional barrier rail on 3 or 4 sides means that the top of the trolley can also be used for transport purposes.

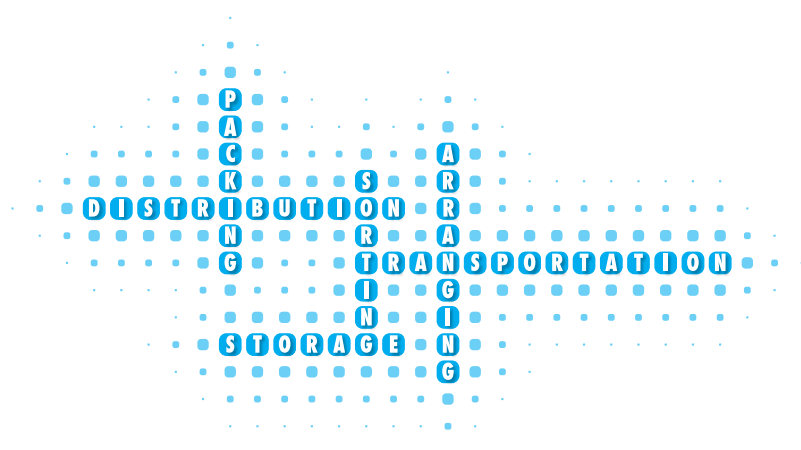


Clearly identifiable
With the optional paper clamp each transport trolley can be labelled so that it gets to precisely where it is needed. Label holders in various formats can also be supplied on request.



Variable capacity
Transport trolleys can be supplied as 2x3/6 StU, 9 StU/2x1-compartment ISO/1x2-compartment ISO trolleys. Fully welded design and standard design, choice of different castor versions and fittings. In-line operation with coupling/towing bar, also friction-damped version available.





We reserve the right to change specifications without prior notice. All dimensions are approximate.

HUPFER® Metallwerke GmbH & Co. KG
Dieselstrasse 20 · D-48653 Coesfeld · Postfach 1463 · D-48634 Coesfeld · Tel.: +49 (0) 25 41/805-0 · Fax: +49 (0) 25 41/805-379 · info@hupfer.de · www.hupfer.de